

**:: Available
For Lease**

Old Town Office Suites Douglas & Washington

914 E. Douglas | Wichita, KS

Building Features:

- Newly Remodeled!
- Attractive Facade
- High Ceilings
- Exposed Brick Walls
- Flexible Floor Plan
- Rear Entrance
- Abundant Parking
- Available Now

Don't miss out on the opportunity to be located in one of the most sought out destinations in Wichita!



Newly Remodeled Office Suites
Located @ Douglas & Washington "In the Heart of Wichita"

**Space Available:
173 - 225 Sq. Ft.**

\$288.33 - \$375.00/Month Full Service

These Historic Old Town Office Suites are conveniently located at the north-west corner of Douglas and Washington in the heart of downtown. This property offers excellent access and visibility, and abundant public parking. These attractive suites are close to numerous shops, restaurants, museums, and other businesses in the Old Town District.

For more information, contact:

Jake Ramstack
316-618-1100
jake@insitere.com

**Available
For Lease**

Old Town Office Suites

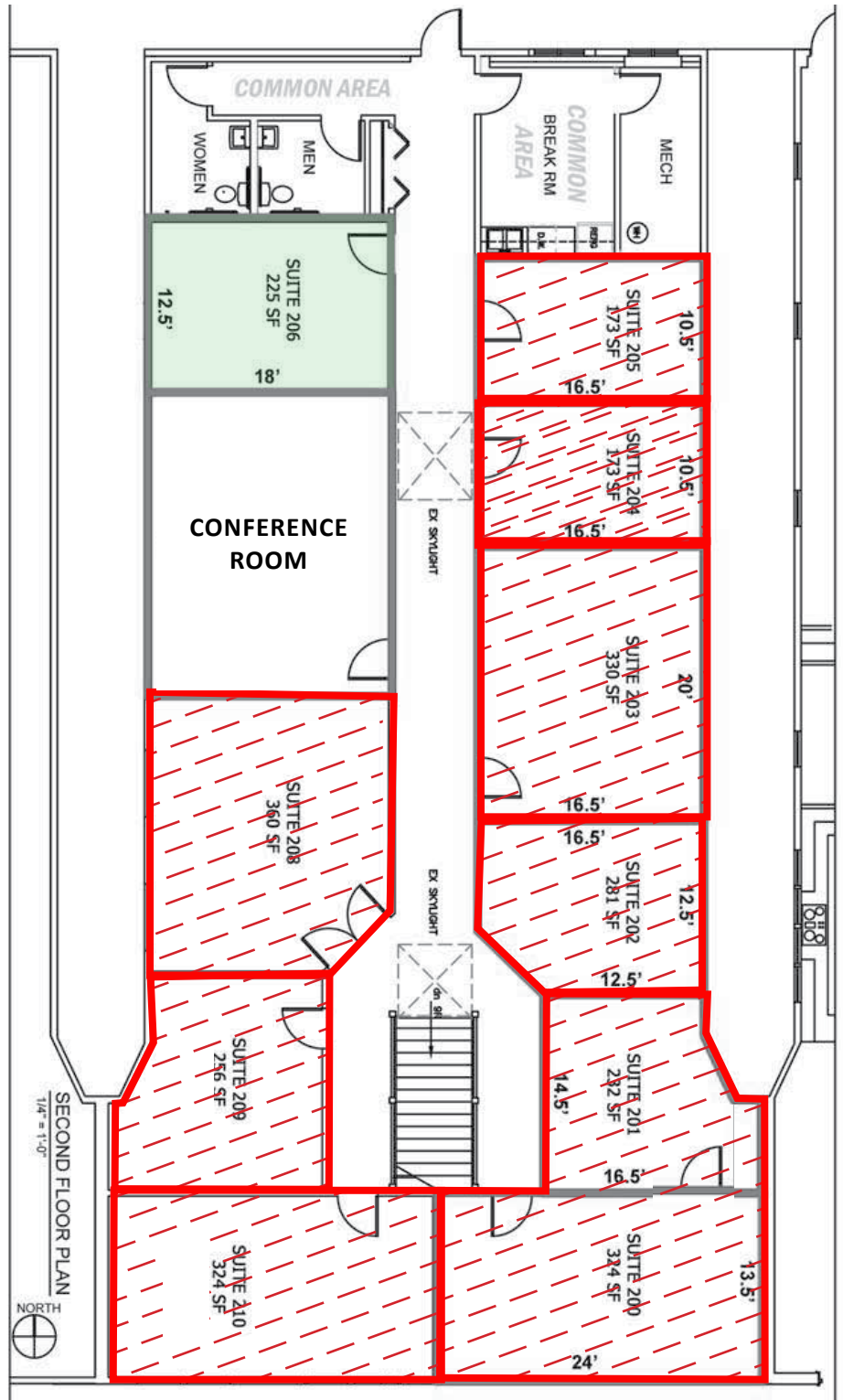
Douglas & Washington

914 E. Douglas | Wichita, KS

Floor Plan

Rate Schedule

Suite	Monthly Rent	Status
Suite 200	\$540.00	Leased
Suite 201	\$386.67	Leased
Suite 202	\$468.33	Leased
Suite 203	\$550.00	Leased
Suite 204	\$288.33	Leased
Suite 205	\$288.33	Leased
Suite 206	\$375.00	
Suite 207	—	(Conference)
Suite 208	\$600.00	Leased
Suite 209	\$426.67	Leased
Suite 210	\$540.00	Leased



**Available
For Lease**

Old Town Office Suites

Douglas & Washington

914 E. Douglas | Wichita, KS

InSite

REAL • ESTATE • GROUP
608 W. Douglas, Suite 106
Wichita, KS 67203



**Available
For Lease**

**Old Town Office Suites
Douglas & Washington**
914 E. Douglas | Wichita, KS

InSite
REAL • ESTATE • GROUP
608 W. Douglas, Suite 106
Wichita, KS 67203